



3 HILLVIEW COTTAGES · GLOUCESTER STREET · PAINSWICK

3 HILLVIEW
COTTAGES GLOUCESTER
STREET
PAINSWICK

A delightful 2 bedroom period cottage full of charm and character within easy walking distance of the centre of the sought after Cotswold village of Painswick with a magical garden tucked away to the rear of the cottage.

BEDROOMS: 2

BATHROOMS: 1

RECEPTION ROOMS: 2

GUIDE PRICE £365,000

FEATURES

- Charming Cotswold cottage
- End of terrace
- Full of charm and character features
- Sitting room with log burner
- Kitchen/Dining room
- Large utility/boot room
- Separate studio
- Good sized garden
- Lovely views
- Close to the village centre



DESCRIPTION

3 Hillview Cottages offers a delightful period home in a fabulous central village location. Opening directly into the main living area, the cottage has an instantly welcoming and homely vibe. The ground floor layout is open-plan through to the kitchen, creating a lovely sense of light and space. A pretty fireplace creates a cosy focal point to the living room, with built in oak cupboards providing useful storage. A magnificent historic mullion window neatly frames the view to the kitchen, allowing ample natural light throughout the ground floor. The kitchen is fitted with shaker-style white units with wooden work top and built-in appliances and room for a dining table. A good-sized utility and cloakroom lead off the rear of the kitchen, together with access to the garden. Stairs lead off the kitchen to a first floor double bedroom with pretty views along Gloucester Street and built-in storage cupboards. There is also a spacious family bathroom located on the first floor. A further double bedroom is located on the second floor with views over the garden.

The real jewel in Hillview Cottage's crown lies in its garden. The garden stretches out to the rear of the cottage and is a magical haven of well-stocked borders, meandering paths and seating areas. Outside lighting provides night time ambience, ideal for alfresco entertaining. A studio is located at the bottom of the garden, with power supply and ideal as an additional space for guests or for a home office.





DIRECTIONS

From our Painswick office, follow New Street in the direction of Cheltenham and turn left just after the traffic lights, into Gloucester Street. 3 Hillview Cottages is located circa 150yards along Gloucester Street on the left hand side, just before the turning into Butt Green.

LOCATION

Often referred to as the Queen of the Cotswolds, Painswick is a quintessentially charming Cotswold village. Steeped in history, the village offers all that is best about Cotswold living; a thriving and welcoming community with an abundance of local events, two pubs, village shops and several cafes.

3, Hillview Cottages is just minutes from the centre of the village and also within easy walking distance of Painswick Beacon, host to a popular gold course and offering stunning countryside for riding and cycling.

One of the key draws to the area is the excellent choice of schools, with sought after grammar schools in Stroud, Gloucester and Cheltenham. School buses run from the centre of the village to most of the local schools and there is also a popular village primary school within minutes from the cottage.

Stroud is the nearest town with excellent facilities including a Waitrose supermarket plus several other leading supermarkets, a multiplex cinema and award winning Saturday Farmers Market. Nearby Cheltenham offers excellent shopping, dining and theatre and is well-known for its annual jazz and literature festivals, as well as its National Hunt racecourse.

Well placed for commuting, Painswick is circa 90 minutes to London by train from nearby Stroud mainline station and approximately 20 minutes drive to Cheltenham and Gloucester. The M5 motorway is also within easy reach, for commuting to Bristol and the Midlands.





3 Hillview Cottages, Gloucester Street, Painswick, Gloucestershire

 = Limited Use Area

House
Studio

Approximate IPMS2 Floor Area
66 sq metres / 710 sq feet
9 sq metres / 97 sq feet

Total
(Includes Limited Use Area)

75 sq metres / 807 sq feet
3 sq metres / 32 sq feet

Simply Plans Ltd © 2024

07890 327 241

Job No SP3316

This plan is for identification and guidance purposes only.

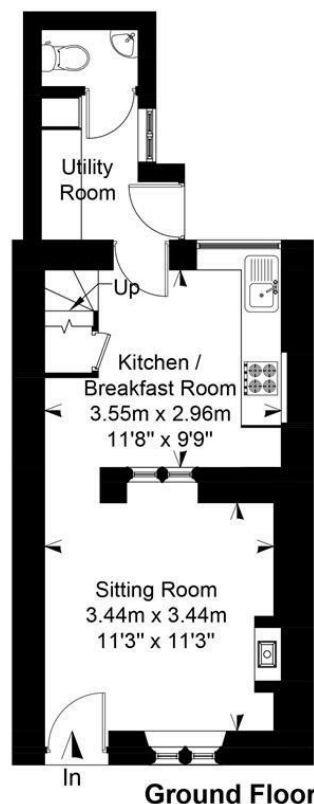
Drawn in accordance with R.I.C.S guidelines.

Not to scale unless specified.

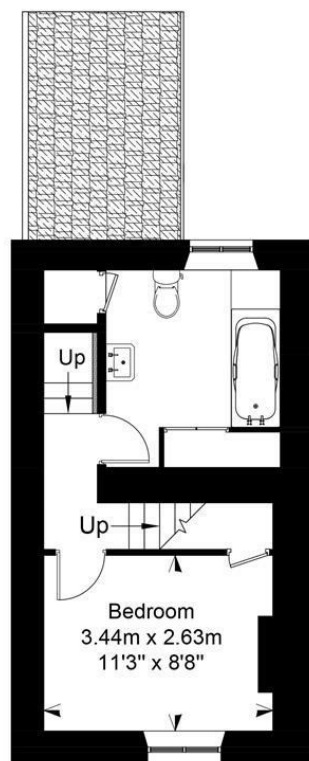
IPMS = International Property Measurement Standard

Outbuildings

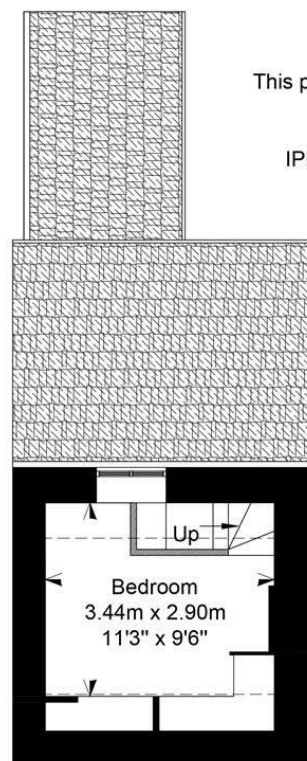
Not Shown In Actual Location Or Orientation



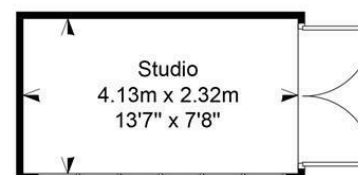
Ground Floor



First Floor



Second Floor



SUBJECT TO CONTRACT

IMPORTANT NOTICE: Murrays Estate Agents for themselves, their clients and any joint agent give notice that whilst these particulars have been prepared with all due care, they are for guidance only, are not guaranteed correct, do not form part of any offer or contract and must not be relied upon as statements or representations of fact. No responsibility is accepted for any error, mis-statement or omission whether verbal or written in describing the property. No warranty or representation is authorised in respect of this property. It should not be assumed, 1) that any services, appliances, or fixtures and fittings are in working order, or fit for their purpose (they not having been tested), or owned by the seller: 2) that statutory regulations e.g. planning consent, building regulations etc., are complied with: 3) that any measurements, areas, distances and/or quantities are correct: 4) that photographs, plans and text portray the complete property. Intending purchasers must satisfy themselves by inspection or otherwise as to the accuracy of the particulars and should seek expert advice where appropriate

MURRAYS
SALES & LETTINGS

Stroud

01453 755552

stroud@murraysestateagents.co.uk

3 King Street, Stroud GL5 3BS

Painswick

01452 814655

painswick@murraysestateagents.co.uk

The Old Baptist Chapel, New Street,

Painswick GL6 6XH

Minchinhampton

01453 886334

minchinhampton@murraysestateagents.co.uk

3 High Street, Minchinhampton GL6 9BN

Mayfair

0870 112 7099

info@mayfairoffice.co.uk

41-43 Maddox Street, London W1S 2PD

TENURE

Freehold

EPC

E

SERVICES

Gas central heating, mains drainage,
council tax band D.

For more information or to book a viewing
please call our Painswick office on 01452
814655